

# YEH BROTHERS GROUP

## AN INNOVATIVE COMPANY

**Yeh Brothers** is a Taiwanese company specializing in the production of Japanese furniture and electronic components as well as BIPV Solar Modules.

Our main production is based in Johor, Malaysia.

The company vision is to promote the energy saving in the solar air-conditional in near future.

The company will also set up a non-profit fund for the employee welfare and for the energy conservation projects.

# OUR PRODUCTS DIVISION

## Furniture Division

- Japanese Kotatsu Table
- Student Desk
- System Kitchen
- Panel Furniture

## Electronic Division

- Electric heaters
- LED Desk Lamp
- LED Ceiling Light

# KOTATSU TABLES

- **Kotatsu tables are Japanese standard living room tables equipped with Electric Heaters to be used during winter.**



# STUDENT DESK

- Our Student Desks are well designed to come with tables, drawers and bookshelves.



# ELECTRIC HEATERS

- Yeh Brothers is currently holding a 90% market share in Japan for the electric heaters. The heater is attached underneath a Kotatsu table to be used in winter.



# LED TABLE AND CEILING LAMPS



# OUR FACTORY

- **A new factory is currently being built in Nusajaya, Johor, Malaysia**
- **The new factory is built on a 200,000 m<sup>2</sup> land with a built-up area of 100,000 m<sup>2</sup>.**
- **The factory will be utilizing Solar BIPV on its roof to generate Electricity used for operations.**

# OUR LOCATION

- The new factory is located in Southern Industrial & Logistics Clusters (SILC) Nusajaya, Johor, Malaysia.
- It is only a 10 min drive from Singapore Tuas border.

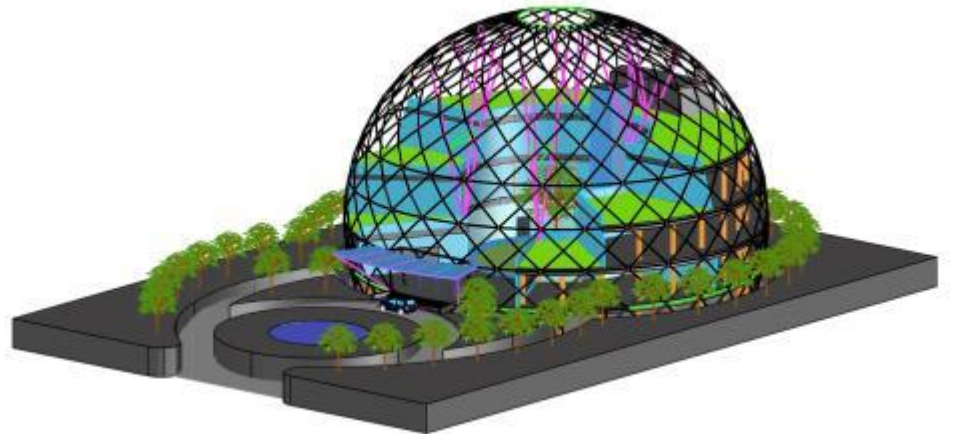




# FACTORY LAYOUT

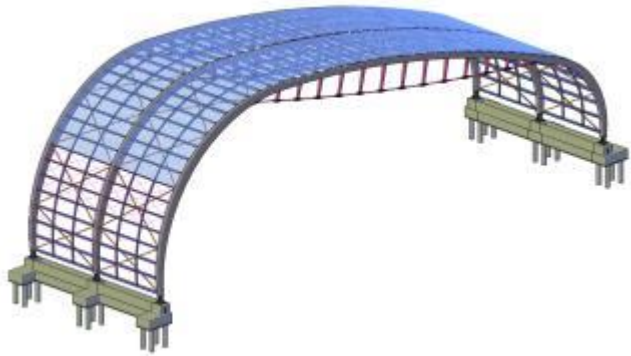
- Yeh Brothers Malaysia Factory Layout





# SOLAR BIPV ROOF

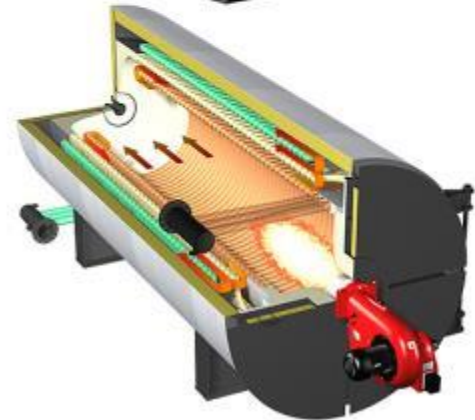
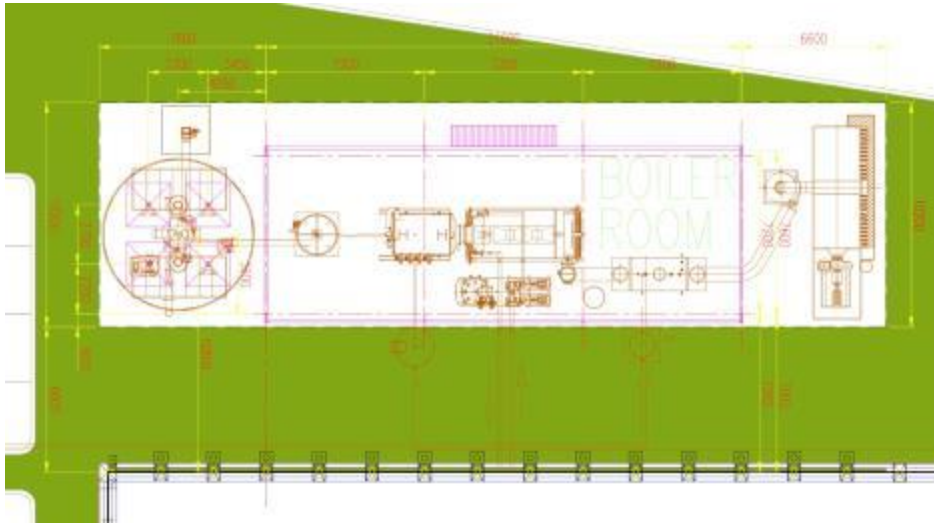
- Our factory's Solar BIPV Installation





# ENERGY RECYCLING

- Yeh Brothers will be recycling the wood dust into Biomass Energy



# MATERIAL PROCESSING

- Melamine Short Cycle Press
- Paper Impregnation Line



# PLASTIC COMPONENTS

- Our plastic components injections machines are designed in such a way no handling time is lost.



# FACTORY OPERATION

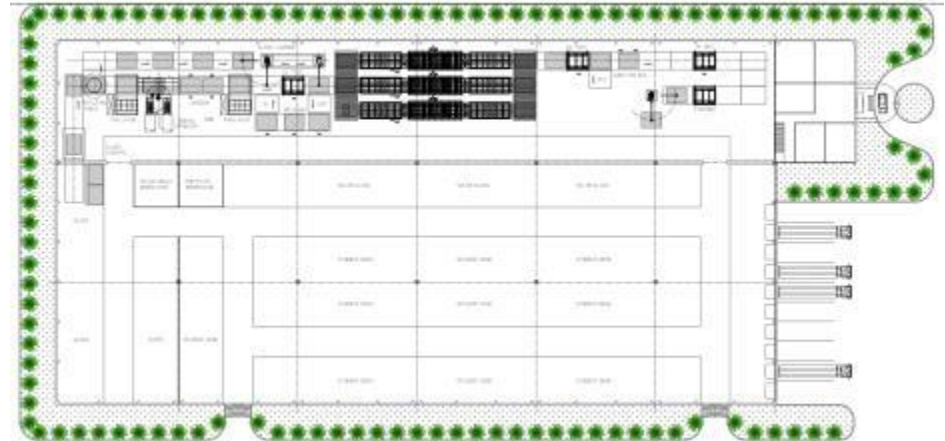
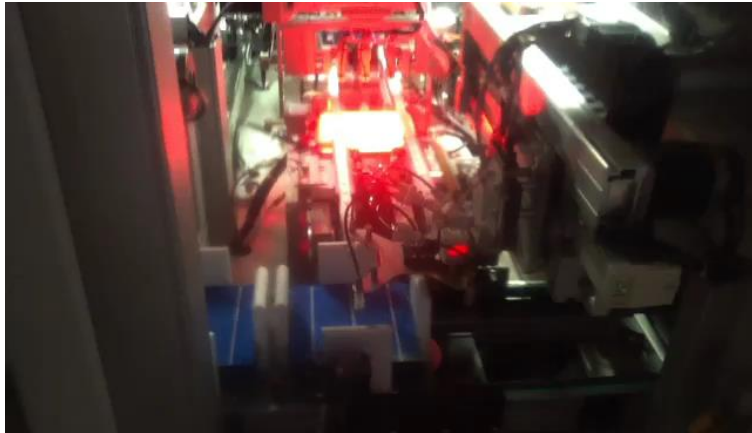
- Yeh Brothers Malaysia will be using automation to maximize the production efficiencies.
- Through-feed production line and Robotic arms will be used to replace manual labour and material handling.





# SOLAR BIPV MANUFACTURING

- We will be using fully automated production line to manufacture the Solar BIPV Modules
- 2 units Gorosabel GTS-18 with 3600 pcs/hour solar cells tabbing and stringing machine will be used.
- Yeh Brothers will be able to produce large BIPV glasses with the installation of 3 units 3 x 8 mtr lamination presses.





# ASRS WAREHOUSE

- **ASRS Warehouse is used to guarantee efficiencies and accuracies in storage and shipping.**
- **Yeh Brothers ASRS warehouse is of 8000 m<sup>2</sup> with a height of 25 mtr.**

